

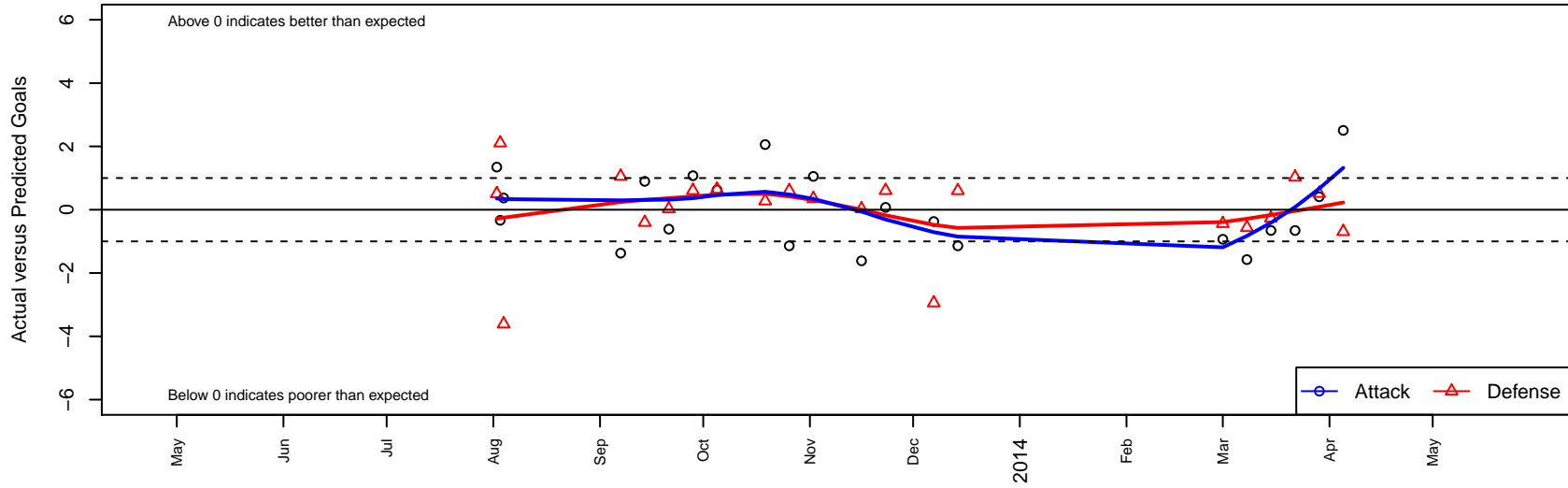
# Granite Falls Thunderbirds G01

Granite Falls Youth SC  
 Granite Falls, WA  
 G01 total strength=329  
 attack=0.19 defense=0.2  
 fall league = NPSL G12D3, NPSL Spr G12D3  
 alt names used:  
 Granite Falls Thunderbirds G01  
 Granite Falls Thunderbirds

Venues played:  
 Marysville Strawberry Classic GU12 Group 2  
 NPSL G12D3  
 NPSL Spr G12D3



**Granite Falls Thunderbirds G01**  
 Dots are actual minus expected GF (blue circles) and GA (red triangles).  
 Blue line is smoothed change in attack strength. Red is smoothed change in defense strength.



	<b>date</b>	<b>home</b>		<b>away</b>		<b>venue</b>	<b>pred.home</b>	<b>pred.away</b>
7568	2014-04-05	Tigers G01	1	Granite Falls Thunderbirds G01	4	NPSL Spr G12D3	0.31	1.49
7528	2014-03-29	Granite Falls Thunderbirds G01	2	Kent United Black G01	0	NPSL Spr G12D3	1.59	0.51
7471	2014-03-22	BIFC Blue G01	0	Granite Falls Thunderbirds G01	0	NPSL Spr G12D3	1.03	0.66
7384	2014-03-15	FME Yellow Jackets G01	2	Granite Falls Thunderbirds G01	0	NPSL Spr G12D3	1.73	0.66
7287	2014-03-08	Granite Falls Thunderbirds G01	0	CSC Velocity Green G01	1	NPSL Spr G12D3	1.58	0.43
7185	2014-03-01	Granite Falls Thunderbirds G01	0	SCORE Patriots Blue G01	1	NPSL Spr G12D3	0.93	0.56
6844	2013-12-14	Seattle United W White G01	0	Granite Falls Thunderbirds G01	1	NPSL G12D3	0.60	2.14
6821	2013-12-07	Granite Falls Thunderbirds G01	1	Silver Lake SC Blueberries G01	4	NPSL G12D3	1.37	1.05
6677	2013-11-23	BYSC Select Cambell G01	0	Granite Falls Thunderbirds G01	2	NPSL G12D3	0.60	1.93
6590	2013-11-16	Granite Falls Thunderbirds G01	0	Mukilteo Rush G01	1	NPSL G12D3	1.61	1.03
6342	2013-11-02	Silver Lake SC Panthers G01	0	Granite Falls Thunderbirds G01	3	NPSL G12D3	0.35	1.95
6189	2013-10-26	Granite Falls Thunderbirds G01	1	Seattle United W White G01	0	NPSL G12D3	2.14	0.60
6026	2013-10-19	Granite Falls Thunderbirds G01	7	MIFC Grizzlies G01	0	NPSL G12D3	4.94	0.27
5680	2013-10-05	Newport FC Predators-Galaxy G01	0	Granite Falls Thunderbirds G01	3	NPSL G12D3	0.64	2.37
5511	2013-09-28	Granite Falls Thunderbirds G01	3	BYSC Select Cambell G01	0	NPSL G12D3	1.93	0.60
5374	2013-09-21	Mukilteo Rush G01	1	Granite Falls Thunderbirds G01	1	NPSL G12D3	1.03	1.61
5210	2013-09-14	Granite Falls Thunderbirds G01	2	Storm King G01	2	NPSL G12D3	1.10	1.60
5055	2013-09-07	Silver Lake SC Blueberries G01	0	Granite Falls Thunderbirds G01	0	NPSL G12D3	1.05	1.37
4563	2013-08-04	North Whidbey Islanders G01	5	Granite Falls Thunderbirds G01	1	Marysville Strawberry Classic GU12 Group 2	1.39	0.63
4514	2013-08-03	Marysville Force G01	5	Granite Falls Thunderbirds G01	0	Marysville Strawberry Classic GU12 Group 2	7.11	0.33
4458	2013-08-02	Granite Falls Thunderbirds G01	3	Snohomish Force G01	0	Marysville Strawberry Classic GU12 Group 2	1.65	0.50